



Architectural **Façade** Solutions

OUTSTANDING QUALITY



SYSTEM BROCHURE

'OUTSTANDING
QUALITY
FROM THE
NETHERLANDS'



ABOUT US

AFS International B.V., who are based in The Netherlands, specialise in manufacturing high-end metal façade systems.

AFS International B.V. are a project related company, offering a service from the start of the design concept to the project hand over. Using the latest design and manufacturing technology, we have great flexibility in our systems, ensuring we complete within budget and programme.



Q-PREMIUM SYSTEM

The Q-Premium system is based on rainscreen technology. It is an open joint system with joint widths of 10 mm or 15 mm. Panel sizes are flexible and can be shaped, including curves and cranking. The system can be installed on new builds or retro fitted.

A combination of materials, finishes, thickness and colours are possible.

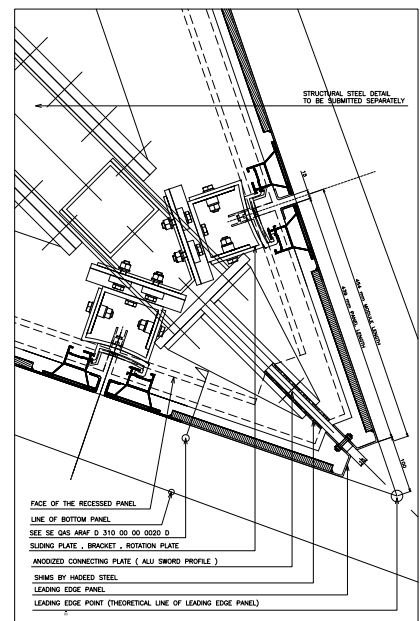
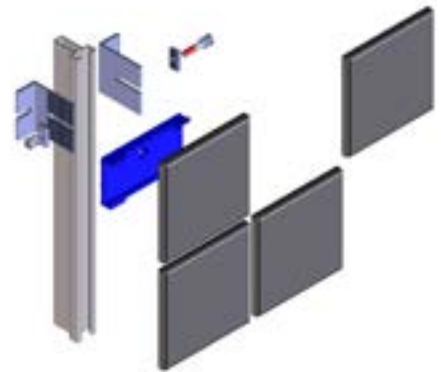
Sizes are 2,000 mm x 4,500 mm, longer length up to 12,000 mm on request.

Specifications

- Outer skin: 1.0 mm pre-coated aluminium* skin
- Core material: aluminium honeycomb
- Inner skin: 0.7 mm primered aluminium* skin

Characteristics

- 30 mm thick, alternative thicknesses are possible
- Extremely flat
- Withstands high wind loads
- Controlled joint width



*Different thicknesses/metals available on request. www.afsi-international.com



Q-BASIC SYSTEM

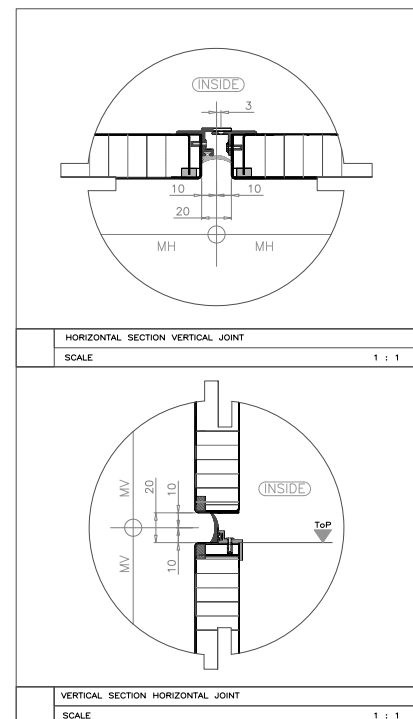
The Q-Basic system is a 20 mm closed joint aluminium honeycomb panel system. The metal skin and the aluminium honeycomb are bonded together by two component polyurethane glues and the joints are closed by an EPDM gasket. The Q-Basic system is fixed to a secondary support manufactured from galvanized steel or aluminium by means of an engineered fixing profile which is mounted to the Q-Basic panel.

Specifications

- Outer skin: 1.0 mm pre-coated aluminium* skin
- Core material: aluminium honeycomb
- Inner skin: 0.5 mm primed aluminium* skin

Characteristics

- 30 mm, alternative thicknesses are optional
- 2000 mm x 4500 mm, longer length on request
- Extremely flat
- Withstands high wind loads



*Different thicknesses/metals available on request. www.afsi-international.com



Q-EXCELLENT SYSTEM

The Q-Excellent system is a 15 mm open joint system with edge extrusions bonded to the skin. The mounting method is similar to that of the Q-Premium system, utilising a secondary support and fixing profile, or a direct mounting.

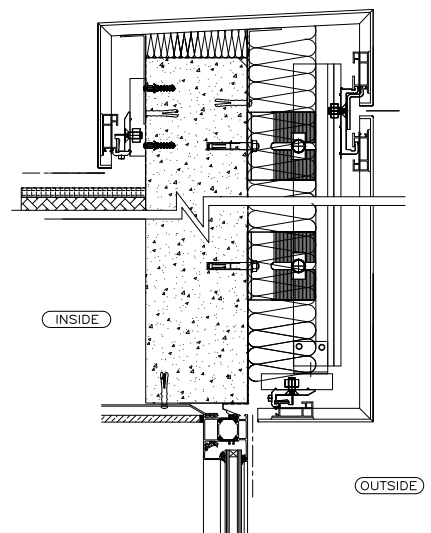
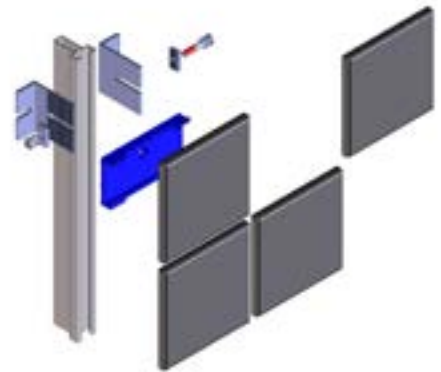
The Q-Excellent system can be supplied in different kind of metals such as aluminium, zinc, copper and stainless steel.

Specifications

- 2-3-4 mm skin thickness's
- Edge extrusion for fixing

Characteristics

- Light weight
- Controlled joint
- Fast and easy to install
- Controlled thermal expansion and contraction





Q-INSULATED SYSTEM

The Q-Insulated system is a very flexible sandwich panel system, built to your requirements, and comprising two external metal skins with a bonded insulation core.

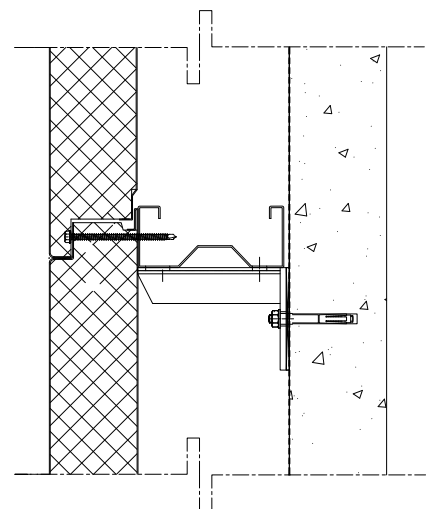
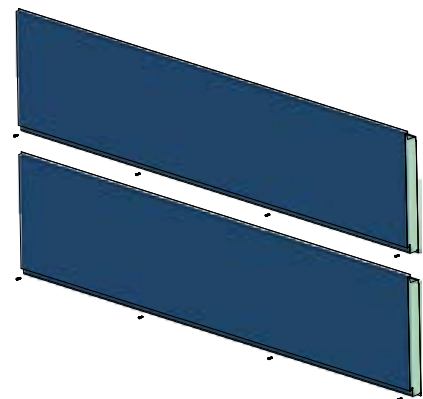
The panel can be insulated with PU/PIR/EPS/MW dependant on the requirements for U-value and fire retardant properties.

Specifications

- Outer skin: 0.7 mm pre-coated aluminium* skin
- Core material: PU/PIR/EPS/MW
- Inner skin: 0.5 mm primered aluminium* skin and material

Characteristics

- Various widths and lengths
- Various thicknesses
- Various core options
- Different metals are possible
- Concealed and exposed fixing
- Fast and easy to install

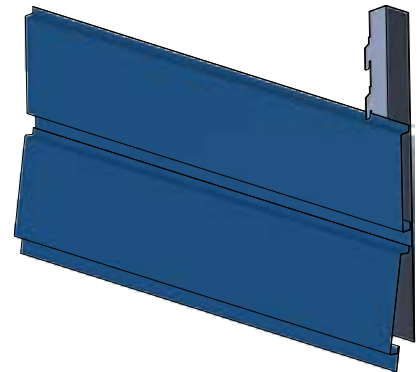


*Different thicknesses/metals available on request. www.afsi-international.com



Q-LINEX

Q-Linex is a single skin panel system, which can be fixed to a simple secondary support, is manufactured in various lengths and widths. The width of the module will define the thickness of material used. This highly flexible system can be produced in various metals such as aluminium, zinc, copper and stainless steel, with various joint options, such as closed, recessed and open joint.

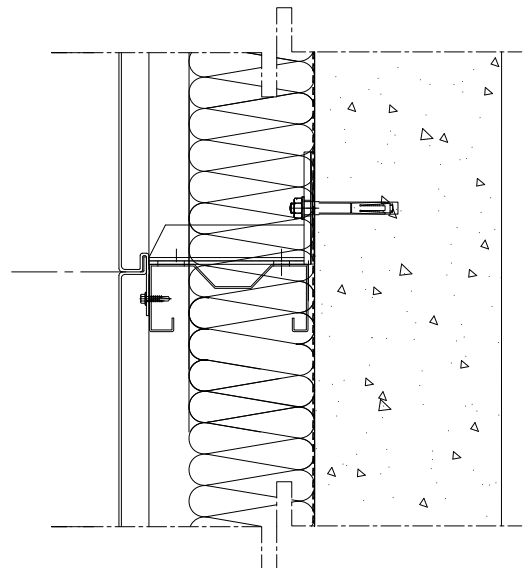


Specifications

- Pre-coated aluminium skin in different thicknesses depending on the width
- Different metals can be manufactured

Characteristics

- Light weight
- Fast and easy to install
- Various thicknesses
- Various lengths
- Various joint options
- Bespoke designs possible





Q-SUNSHADE AND LOUVRE SYSTEMS

AFS International B.V. have a range of performance sunshade and louvre systems, which can be produced to give that extra dimensions to the building, whilst providing shade or ventilation for the people working inside.

Sunshade systems

- Q-Airwing
- Q-Glass
- Q-Recht
- Q-Wood

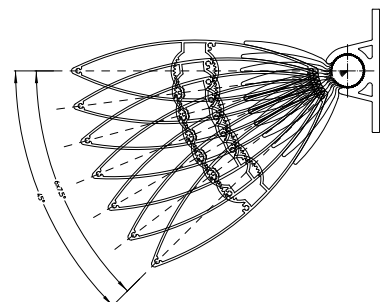
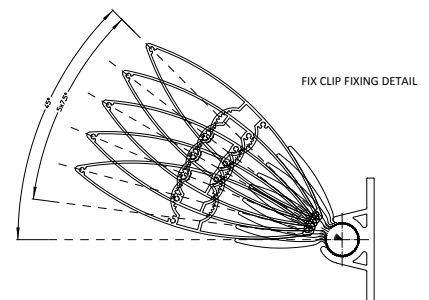
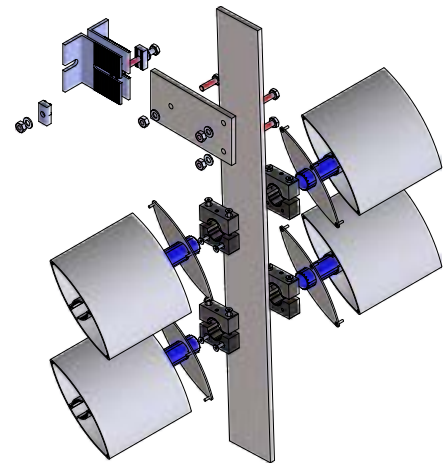
Louvre systems

- Q-Acoustic louvre
- Q-Sandtrap
- Q-Performance

Characteristics

- Low maintenance
- Independently tested
- Fast and easy to install
- Fixed/motorized/operable
- Proprietary system
- Upgrade buildings

Please visit www.afsi-international.com/louvres for further details





Q-SHUTTER SYSTEM

AFS International B.V. offer a fully flexible shutter screen which offers a high performance solution for sun control or privacy screening. Manufactured from lightweight aluminium, the screen can be fixed or sliding, and operated manually or motorised and controlled by the building management system.

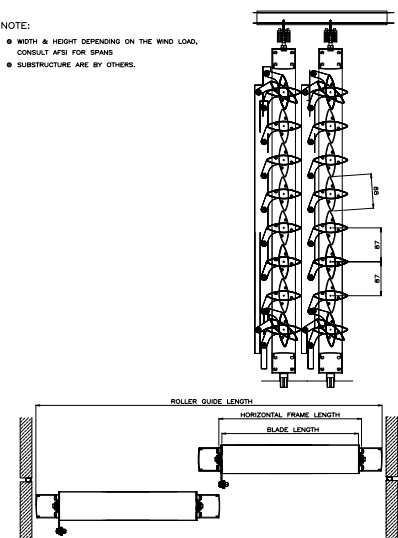
The shutter screen has an aluminium perimeter frame with integrated elliptical blades and concealed fixings.

Characteristics

- High performance solution for sun control
- Fixed and sliding options
- Manual retractable or motorized options available
- Easy to install
- Light weight
- Louver blades have concealed fixings
- Easy integration with other AFS International B.V. façade products
- Easy to maintain

NOTE:

- WIDTH & HEIGHT DEPENDING ON THE WIND LOAD, CONSULT AFSI FOR SPANS
- SUBSTRUCTURE ARE BY OTHERS.





Architectural Façade Solutions International B.V.
Produktieweg 9, 9301 ZS Roden | P.O. Box 286, 9300 AG Roden | The Netherlands
T +31 50 820 06 75 | E info@afsi-international.com | I www.afsi-international.com

OUTSTANDING QUALITY